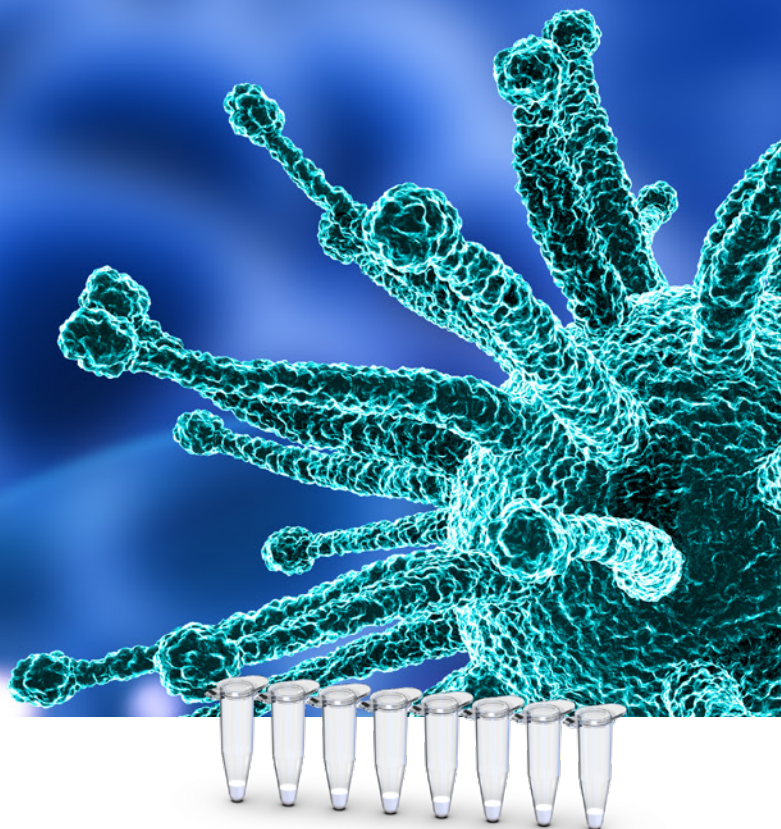


WizDx™ CrystalMix HSV 1/2

- High Sensitivity & Specificity
- Room temperature Storage/Shipping
- Ready-to-use Lyophilized PCR Kit



Key Features of CrystalMix HSV 1/2 Kit



Anti-Carryover Technology

Prevents cross-contamination



Hot-Start PCR Technology

Minimizes non-specific PCR reactions and increases specificity



Enhanced-stability technology

Sustains long-term storage at room temperature



Automated dispensing system

Maximizes reproducibility and minimizes experimental errors



Ready-to-use, Freeze-dried form

Allows convenient storage and minimal experimental process

High Sensitive

The LoD of WizDx™ CrystalMix HSV 1/2 is 1.25 copies/μL for HSV 1 and 2 copies/μL for HSV 2.

Perfect Reproducibility

WizDx™ CrystalMix HSV 1/2 kits are precisely dispensed by fully automated dispensers in facilities certified with ISO 13485 and GMP. They are supplied in lyophilized form with a single test quantity, so all kits deliver exactly the same results.

Prevent Carryover-contamination

WizDx™ CrystalMix HSV 1/2 kit contains Uracil-DNA glycosylase (UDG) and dUTPs eliminating possible carryover contamination.

High Specificity

Accurate inspection is possible through the specific probe design for the Glycoprotein D gene region of HSV 1 & 2.

Easy & Accurate

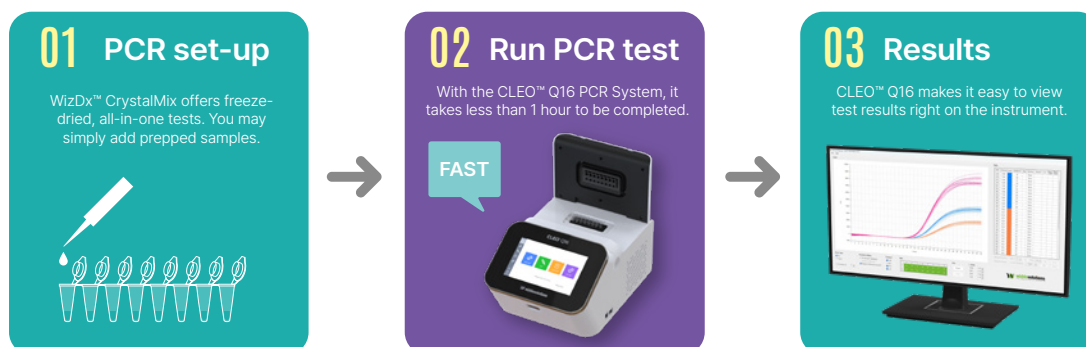
Lyophilized PCR kits are very convenient to use because you can test immediately with the addition of sample DNA only, and provide more accurate results because you can drastically reduce experimental errors or contamination that may occur during the preparation process.

Convenience & Stable

Wizbiosolution's patented HNC(Heteromorphous Nanopolymer Coating) technology applied for WizDx™ CrystalMix PCR Kit enables the reagents stored and transported at room temperature with the benefits of user-convenience and stabilization.



Easy & Fast Molecular Diagnosis



Specifications

| | |
|--------------------------|---------------------------------------------------------------------------------------------------------------------------------------------------------------------------------------------------------------------------------------------------|
| Principle of Procedure | Real-time PCR |
| Target | FAM for HSV 1, HEX for HSV 2, Cy5 for Internal Control |
| Tests for Package | 96 Tests/kit |
| Reagent Type | Lyophilized (Freeze-dried) in PCR tube |
| Limit of Detection (LoD) | 1.25 copies/μL for HSV 1, 2 copies/μL for HSV 2 |
| Precision | Respectively detect the reference specimen of high and low concentrations in different time ranges-10 times, and the precision values of intra-assay and inter-assay Ct values were all <1.5%. |
| Specificity | For analytical specificity, cross-reactivity was evaluated by testing related pathogens and microorganisms that are likely to be present in the cervical, vaginal, and genital. The test was repeated three times and showed no cross-reactivity. |
| Sample Types | Vaginal swabs or urine specimens |
| Shipping/Storage | Shipping and Storage at room temperature for 12 months |
| Compatible Instruments | CLEO™ Q16 (Wizbiosolutions), CFX96 (Bio-Rad), QuantStudio™ 5 (ThermoFisher) |

Ordering Information

| Cat No. | Product | Package Size |
|---------|--------------------------------|--------------|
| DX1231 | WizDx™ CrystalMix HSV 1/2 | 96 T |
| CL0016 | CLEO™ Q16 Real-time PCR system | 1 set |

MFDS License No. IVD-23-820

