

EzDirect™ Mouse Direct PCR Kit (For Genotyping)

RUO For Research Use Only

REF W1450

DESCRIPTION

EzDirect™ Mouse Direct PCR Kit (For Genotyping) is specifically designed for mouse genotyping assay with no prior DNA purification. This kit is extremely easy and simple, just mix with the sample and buffer for preparing PCR.

KIT CONTENTS

Contents	W1450-2	W1450-5
EzDirect™ Buffer	20 ml	50 ml
Ez-PCR Mix (2X)	2 X 1 ml	5 X 1 ml
L-Solution (lyophilized)	1 vial	3 vial

APPLICATIONS

- Direct-PCR of Mouse tissue (tail, ear) for genotyping

STORAGE CONDITIONS

EzDirect™ Buffer : Room temperature

Ez-PCR Mix (2X) : -20°C

L-Solution (lyophilized) : 4°C


** After receiving the L-Solution, please store at 4°C.


After dissolved in distilled water, store the L-Solution solution at 4°C for up to 3 months. For longer storage (up to 1 year), the L-Solution solution should be divided into small aliquot and stored at -20°C.

QUALITY CONTROL ANALYSIS:

In accordance with Wizbiosolutions Inc. ISO 13485-certified Quality Management System, each lot EzDirect™ Mouse Direct PCR Kit (For Genotyping) is tested against predetermined specifications to ensure consistent product quality.

PROTOCOL

 The optimum usage is depending on the experiment and specimen, please optimize the sample and PCR template volume by each condition.

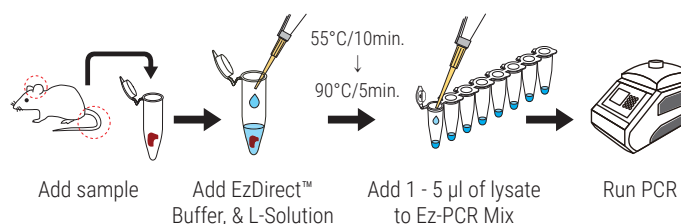
- Place a 1-2mm piece (5 -10mg) of mouse tissue into the 1.5ml micro tube.
- Add 100µl of EzDirect™ Buffer and 5µl of L-Solution and mix by vortex 30 seconds.
- Incubate at 55°C for 10 minutes.
 If the sample does not lysis easily, Incubate for an additional 10 minutes.
- After the digestion process, incubate at 95°C for 5 minutes to inactivate protease.
- The following table shows recommended reaction conditions.

Component	20 µl reaction	Final Conc.
Ez-PCR Mix (2X)	10 µl	1X
10µM Forward Primer	1 µl	1.0 µM
10µM Reverse Primer	1 µl	1.0 µM
Lysate (Supernatant)	1-5 µl	
Water, RNase-Free	up to 20 µl	NA

B. PCR Conditions

Step	Temp (°C)	Time	Cycle
Initial Denaturation	95	5 min.	1
Denature	95	30 sec.	35 - 45
Anneal	50-65	30-60 sec.	
Extend	72	1-2 min. (kb/min)	
Final Extension	72	5 min.	1

SIMPLE PROTOCOL



TECHNICAL DATA

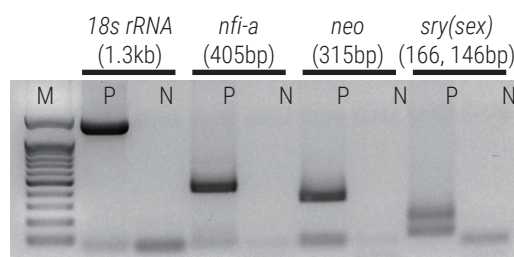





Fig. Mouse tail direct-PCR results with EzDirect™ Mouse Direct PCR Kit. After incubation 90°C/5min, 2µl of supernatant used as PCR template. Lane M : 100bp DNA marker, Lane P : Positive control, Lane N : Negative control.

ORDERING INFORMATION

Product	Cat No.	Package
EzDirect™ Mouse Direct PCR Kit (For Genotyping)	W1450-2	200 rxn
	W1450-5	500 rxn

Technical Support



 www.wizbiosolution.com
 support@wizbiosolution.com
 +82 70 7605 5066



Wizbiosolutions Inc.
A-802, Woolim Lions Valley 2
Sagimakgol-ro 45beon-gil 14
Jungwon-gu, Seongnam-si
13209 Republic of Korea