

Nucleic acid extraction made easy

CLEO™ AP16

- **POCT** | Compact Size
- **ECONOMICAL** | Affordable Price
- **EFFICIENT** | Up to 16 sample/run
- **HIGH-PURITY** | Magnetic bead based method
- **EASY-TO-USE** | Standalone software, Touch screen

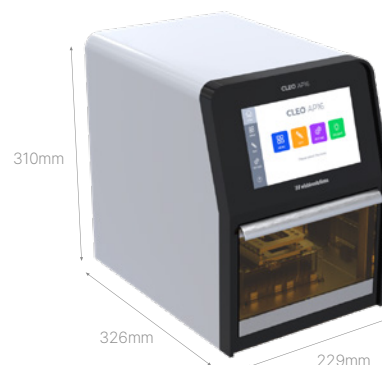


Advantages of CLEO™ AP16

CLEO™ AP16 is an automated system that extracts high-purity nucleic acids using magnetic particle technology. A user-friendly, intuitively designed software program and touchscreen display are applied. High-purity nucleic acids can be extracted from up to 16 samples by applying various types of extraction kits.

○ Innovative design & convenience

- The innovative design of CLEO™ AP16 is very quiet due to the specially designed motor control system.
- The system, which is an intuitive UI and optimized user-friendly system, allows you to set up extraction easily and quickly.



○ Magnetic bead based extraction

Nano-magnetic beads enable selective extraction of only the desired DNA or RNA.



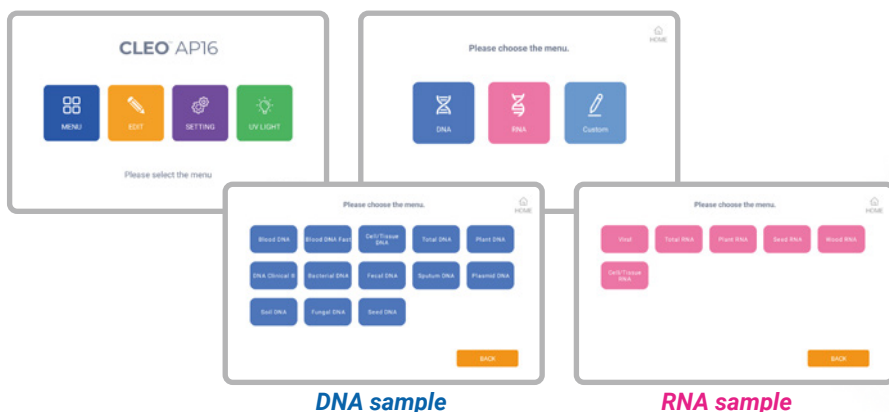
○ Wide selection of cartridge

You can select cartridges from 1 prep to 16 prep maximizing usability and convenience.



Intuitive interface software and **excellent extraction efficiency** thanks to optimal extraction conditions.

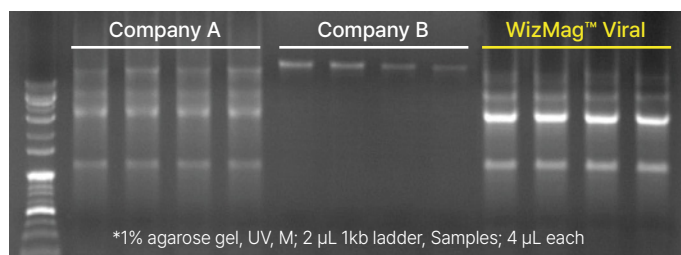
CLEO™ AP16 software serves an intuitive customizable design and easy-to-use open platform system integrated into the 10-inch-touch screen.



○ Performance comparison test result

Comparison test for Total RNA extraction efficiency

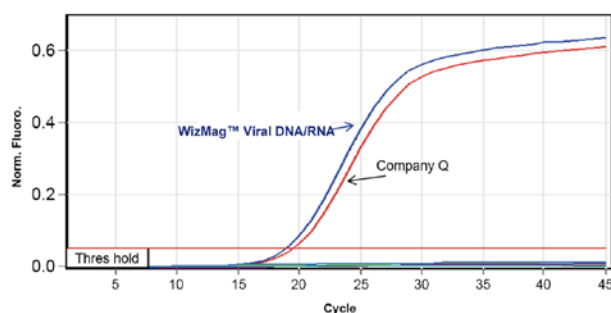
- Sample: Hela cells, 1×10^6 cells/prep
- Elution volume: 100 μ L
- Reagent : WizMag™ Viral DNA/RNA Kit
- Results: Extraction of WizMag™ Viral DNA/RNA showed higher yield and purity compared to competitors.



Company	Conc.(ng/ μ L)	260/280 nm	260/230 nm
Company A	59.656	2.04	1.82
Company B	27.672	1.97	1.47
WizMag™ Viral	134.775	2.05	2.06

Comparison test for COVID-19 virus detection

- Provides faster Ct value and higher purity compared to competitors.
- Real-time PCR conditions : Taqman probe based real-time RT-PCR, Threshold : 0.05 (fixed)



Company	RNA conc.	A260/280	Ct value
Company Q	46.2 ng/ μ L	1.85	19.59
WizMag™ Viral	56.1 ng/ μ L	1.97	18.96

○ Specifications

Model	CLEO™ AP16
Number of samples	1 to 16 samples
Extraction method	Magnetic bead-based extraction
Operation temperature	15-30°C (59-86°F)
Operating humidity	20-80% relative, non-condensing
Sample volume	200 - 300 µL
Extraction time	15 - 60 min.
Operating system	Android OS
Display	7 inch full-color HD LCD capacitive touch screen
Protocol storage	Pre-loaded protocols for WizMag™ Kits
Input power / Max power	100 - 240 VAC (50/60 Hz) / 500W
Dimensions (LxWxH)	326 × 229 × 310 mm
Weight	8.6 kgs




○ Ordering information

Product	Cat No.	Package
CLEO™ AP16	CL2016	1 system

Nucleic acid purification kits	96-well plate type		6-well strip type		Description
WizMag™ Total DNA	W7000 W7001	64 prep 192 prep	W7002 W7003	32 prep 96 prep	Cell, Body fluids
WizMag™ Blood DNA	W7010 W7011	64 prep 192 prep	W7012 W7013	32 prep 96 prep	Blood
WizMag™ Cell/Tissue DNA	W7040 W7041	64 prep 192 prep	W7042 W7043	32 prep 96 prep	Cell, Tissue
WizMag™ Viral DNA/RNA	W7020 W7021	64 prep 192 prep	W7022 W7023	32 prep 96 prep	Virus
WizMag™ Bacterial DNA	W7110 W7111	64 prep 192 prep	W7112 W7113	32 prep 96 prep	Gram(-)bacteria, Gram(+) bacteria
WizMag™ Total RNA	W7070 W7071	64 prep 192 prep	W7072 W7073	32 prep 96 prep	Cell, Body fluids
WizMag™ Total RNA Plus	W7074 W7075	64 prep 192 prep	W7076 W7077	32 prep 96 prep	Cell, Body fluids
WizMag™ Cell/Tissue RNA	W7090 W7091	64 prep 192 prep	W7092 W7093	32 prep 96 prep	Cell, Tissue
WizMag™ DNA Clinical II	W7200 W7201	64 prep 192 prep	W7202 W7203	32 prep 96 prep	Ccultured cells, swabs, body fluids
WizMag™ Sputum DNA	W7130 W7131	64 prep 192 prep	W7132 W7133	32 prep 96 prep	Sputum, TB



A-1806, Woolim Lions Valley 2, Sagimakgol-ro 45beon-gil 14,
Jungwon-gu, Seongnam-si, Gyeonggi-do 13209 Republic of Korea

 www.wizbiosolution.com
 support@wizbiosolution.com
 +82 70 7605 5066

