

EzDirect™ Buffer (Blood)

RUO For Research Use Only

REF W5103 / W5104

DESCRIPTION

EzDirect™ Buffer (Blood) is designed to perform PCR directly from various samples with no prior DNA purification. Samples such as blood, plasma and serum are suitable materials. This kit is extremely easy and simple, just mix with the sample and buffer for preparing PCR.

KIT CONTENTS

Contents	W5103	W5104
EzDirect™ Buffer (Blood)	25 ml	50 ml

APPLICATIONS

- Direct-PCR


STORAGE CONDITIONS

Store at room temperature.


QUALITY CONTROL ANALYSIS:

In accordance with Wizbiosolutions Inc. ISO 13485-certified Quality Management System, each lot EzDirect™ Buffer (Blood) is tested against predetermined specifications to ensure consistent product quality.

PROTOCOL

 The optimum usage is depending on the experiment and specimen, please optimize the sample and PCR template volume by each condition.

A. Whole Blood

1. Collect blood into tubes containing anticoagulant.
2. Transfer 10~50µl of blood to 1.5ml micro tube.
3. Add 100µl of EzDirect™ Buffer and mix by vortex 30 sec.
4. Store at R/T for 10 min.
 If the sample does not lysis easily, incubate at 80°C for 10 min.
5. Use 1~5µl of supernatant directly to PCR reaction.

B. Serum / Plasma

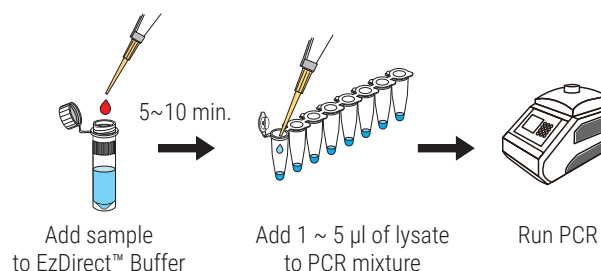
1. Transfer 10~50µl of Serum (or Plasma) to 1.5ml micro tube.
2. Add 100µl of EzDirect™ Buffer and mix by vortex 30 sec.
3. Store at R/T for 10 min.
4. Use 1~5µl of supernatant directly to PCR reaction.

C. Dried blood spot

1. Collect the blood sample onto a collection card or filter paper and allow drying completely.
2. Cut the filter paper into 5x5mm squares and 3~5 pieces into a 1.5ml micro tube.
3. Add 100µl of EzDirect™ Buffer and mix by vortex 30 sec.
4. Store at R/T for 10 min.
5. Use 1~5µl of supernatant directly to PCR reaction.

 If you can not test immediately, keep the lysate in the refrigerator. the lysate stable for 1 month.

SIMPLE PROTOCOL



TECHNICAL DATA

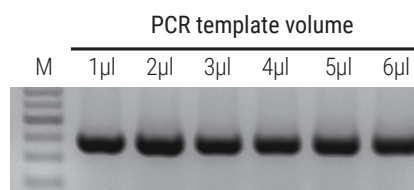


Fig 1. Whole blood direct-PCR results with EzDirect™ Buffer. 10µl of whole blood mixed with EzDirect™ Buffer and after incubation step 1~6µl of supernatant used as PCR template. Lane M : 100bp DNA marker

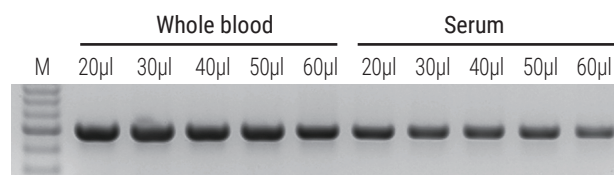


Fig 2. Whole blood direct-PCR results with EzDirect™ Buffer. 20~60µl of whole blood and serum mixed with EzDirect™ Buffer and store at R/T for 10min. After incubation step 1µl of supernatant used as PCR template. Lane M : 100bp DNA marker

TROUBLE SHOOTING GUIDE




- If no PCR amplification,
 Reduce the amount of template by 0.5 µl and reacts again.

ORDERING INFORMATION

Product	Cat No.	Package
EzDirect™ Buffer (Blood)	W5103	25 ml
	W5104	50 ml

Technical Support



 www.wizbiosolution.com
 support@wizbiosolution.com
 +82 70 7605 5066



Wizbiosolutions Inc.
A-802, Woolim Lions Valley 2
Sagimakgol-ro 45beon-gil 14
Jungwon-gu, Seongnam-si
13209 Republic of Korea